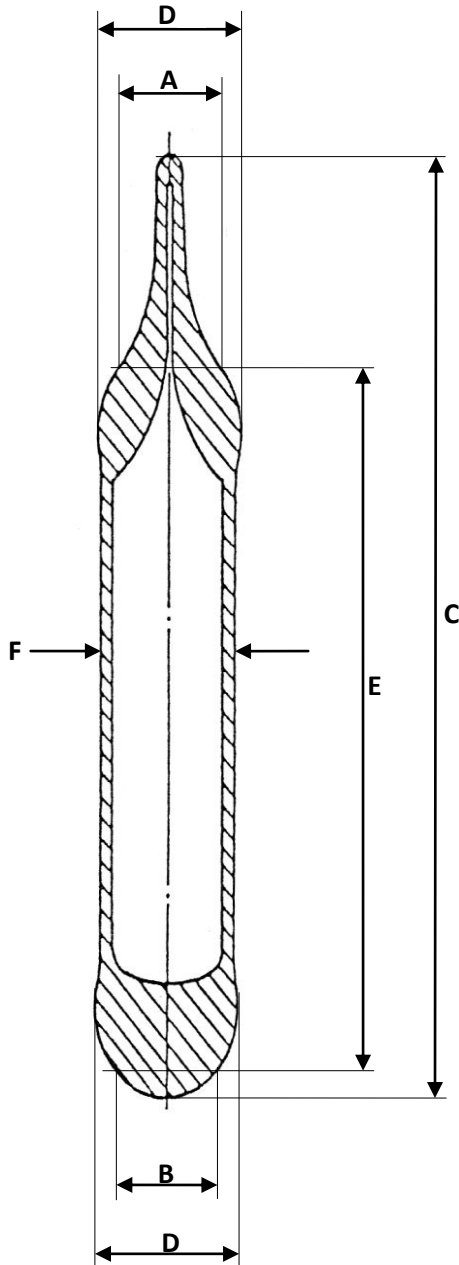


Drawing NOT to Scale



### Technical Details

1. The 984 frangible Sprinkler Bulb is a 4mm diameter glass bulb, especially designed to meet the current requirements for *Special Response* standard sprinkler bulbs, with the fastest permitted response time. It is manufactured from a *stock* 4mm tube of manufacturer's tolerance.
2. During operation the liquid within the bulb will expand until the required operational temperature is reached. At this point the glass bulb will 'burst' and fracture into small fragments, allowing the sprinkler mechanism to operate.
3. This bulb is designed to fulfil the requirements of the standards detailed in the table below.
4. Precise calibration of the bulbs during the production process enables accurate operating temperatures to be achieved.
5. With the 20mm length of the parallel sides, the surface area of the glass is maximised to allow the optimum conductivity of heat from the surrounding air to the bulb liquid. This combined with the special formulation of thermally expansive chemicals enables significant improvement in response times.

### Specification

Critical Dimensions (mm)	A = Typical Seat Dia.	B = Typical Base Dia.	C = Max Length	Dia. D = Max Strengthening	E Seating Length	F = Body Diameter
		2.7 to 3.2	2.5 Min.	23.5	4.3	20 Ref. Only
Strength (Crush load) kN	Minimum (kN)			LTL Typical		
	3.2			2.5		
Note: Specific end user 'assembly loads' and the relevant Standard 'Load Safety Factors' shall be taken into account						
Nominal Temperature Range °C (±3.5%)	Orange	Red	Yellow	Green	Blue	
	57	68	79	93	141	
Response Data (RTi) - 68°C Bulbs	Typical Operating Time (UL)			Typical RTi (EN)		
	N/A			52 (EN)		
Standards Applicable	BS EN12259					



Day-Impex Ltd, Station Works, Station Road,  
Earls Colne, Colchester, Essex, CO6 2ER  
United Kingdom  
Tel: +44(0) 1787 223232, Fax: +44(0) 1787 224171  
www.day-impex.co.uk

<b>Title:</b> Bulb Technical Criteria			<b>Drw No.</b> DI-984-01	
<b>Change/Issue History</b>		<b>Rev</b>	<b>Date</b>	<b>Bulb Art. No.</b>  <b>984</b>
Max Length C amended (was 25.5) & note added		A	16/07/08	
Correction of 'typo' error – Dia 'D' should be 4.3		B	24/09/08	
RTi & Operating Time update		C	16/10/08	
Clarification & update of parameters and data		D	11/11/08	
<b>Authorised</b>			<b>Date</b>	11/11/08